

PCMCIA Adapter Card Installation Instructions



Audio Precision, Inc.
PO Box 2209
Beaverton, Oregon 97075-2209
U.S. Toll Free: 1-800-231-7150
Tel: 503-627-0832 Fax: 503-641-0806
email: helpsupport@audioprecision.com
Web: audioprecision.com

Copyright © 2000 by Audio Precision, Inc. All rights reserved. No part of this document may be reproduced or transmitted in any form or by any means, electronic or mechanical, including photocopying, recording, or by any information storage and retrieval system, without permission in writing from the publisher.

Audio Precision®, System One®, System One + DSP®, System Two®, Dual Domain®, APWIN®, AUDIO.TST®, FASTTEST®, and Portable One® are registered trademarks of Audio Precision, Inc.



This mark signifies that the product conforms to all applicable requirements of the European Community. A Declaration of Conformance is included with the user information that describes the specifications used to demonstrate conformity.

Published by:



Printed in the United States of America

Contents

Description	3
What is PCM-WIN Interface	3
Why PCMCIA Interface.....	3
What this product consists of, and what else is needed.....	3
Installation Procedure	5
For Windows 95 and Windows 98 Systems	5
For Windows NT Systems.....	12

Description

These instructions are specific to installing a PCMCIA adapter card in your desktop computer. This allows you to use a PCM-WIN PCMCIA Interface Card to control Audio Precision instruments via the APIB.

What is PCM-WIN Interface

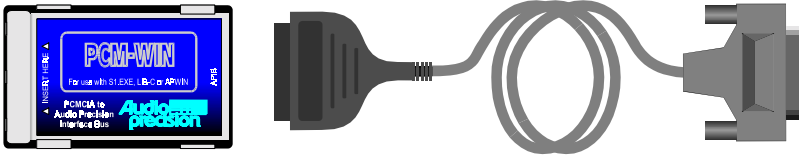


Figure 1

The Audio Precision PCM-WIN Interface card is a PCMCIA to APIB interface adapter (see Figure 1). Normally, it is used to connect a laptop computer equipped with a PCMCIA Type II slot to Audio Precision instruments via the Audio Precision Interface Bus (APIB). It functions the same as the ISA-WIN interface card that is generally used for the same purpose in desktop computers.

Why PCMCIA Interface

By installing a PCMCIA adapter interface card in an ISA slot of a desktop computer, you can easily move the PCM-WIN Interface card among computers, whether desktop or laptop.

What this product consists of, and what else is needed

These instructions are specific to the PCMCIA Card Drive (see cover photo). This card is installed in an ISA slot of a desktop computer, and will accommodate two type I, two type II, a combination of one type I and one type II cards, or one type III PCMCIA card. Although the capability of this adapter card is broader, these instructions focus on installing the card in a computer running Windows 95, 98, or NT 4.0 (or later), and configuring the system to control Audio Precision instruments. In particular, we urge you NOT to use the installation disk that comes with this product. The disk installs CSS (Card and Socket Services) files, which are not relevant to Windows 95, 98, or NT

operating systems. Further, if installed, these files will conflict with those used in this application. We therefore suggest you follow these instructions rather than those in the manufacturer's user's manual, to avoid having to sift through general, non-applicable information. The installation disk and user's manual have been placed in a sealed envelope for archival purposes.

In addition to the card, you will need an Audio Precision PCM-WIN card and its accompanying APIB interface cable (shown in Figure 1).

The sequence of this procedure is critical to the success of the installation. Follow these instructions carefully to insure proper operation.

Installation Procedure

For Windows 95 and Windows 98 Systems

1. Install the PCMCIA adapter card in the computer:
 - a) With the power turned off, remove the covers from the computer.
 - b) Install the PCMCIA adapter card in any available ISA slot.
 - c) Replace the covers and turn on the power.
2. Run the Add-New-Hardware Wizard.
 - a) After windows boots choose Start-Settings-Control Panel. See Figure 2.

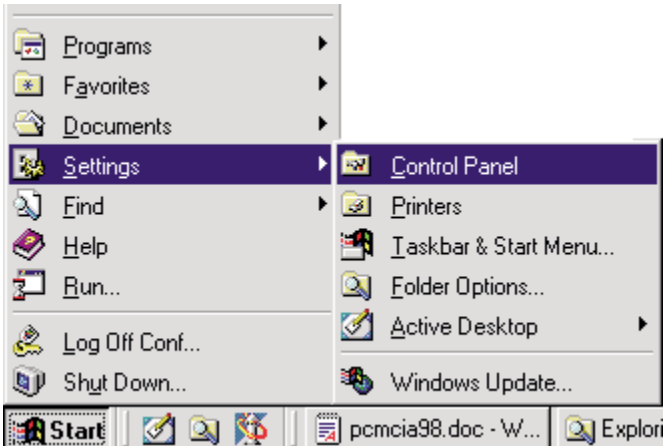


Figure 2

- b) double-click the “Add New Hardware” Control Panel icon. See Figure 3.

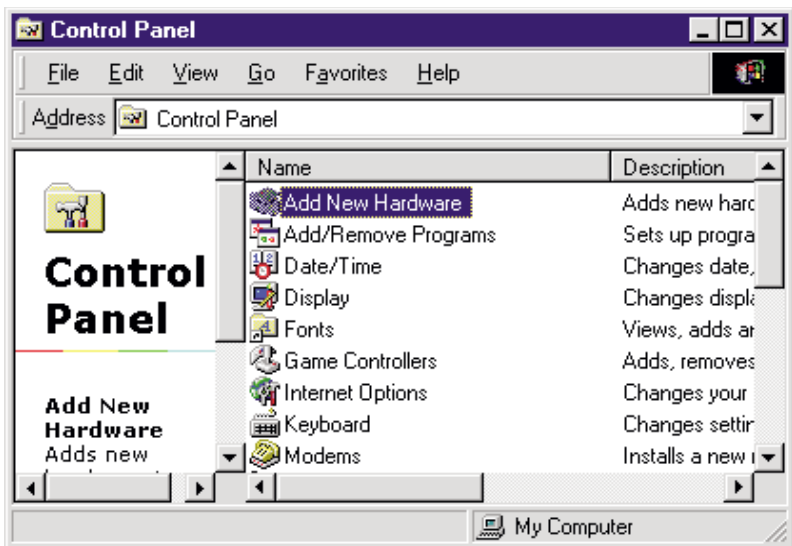


Figure 3

- c) The following window (Figure 4) appears. Click the Next> button.



Figure 4

- d) The following dialog box (Figure 5) appears. Click the Next> button.



Figure 5

- e) The following dialog box (Figure 6) will display for a few minutes...



Figure 6

- f) ...Then the following dialog box (Figure 7) appears. Make sure that Yes is selected and click Next>.

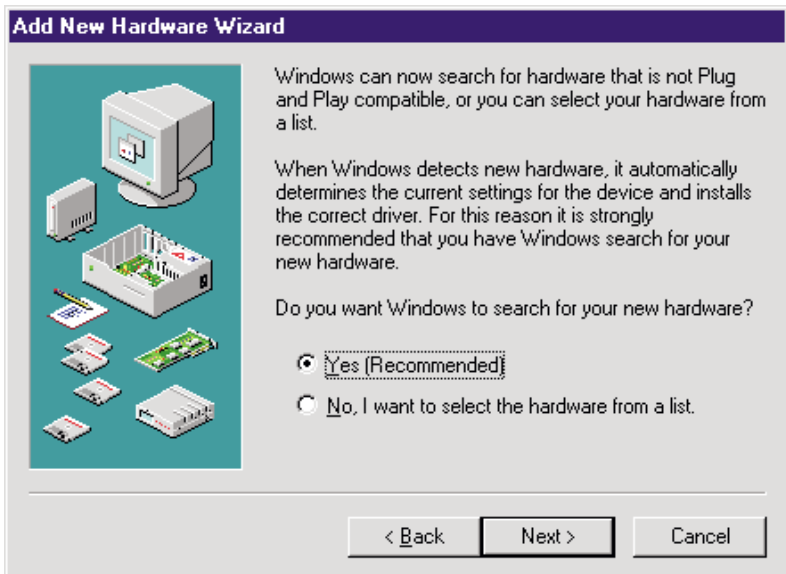


Figure 7

- g) The following window (Figure 8) appears. Click the Next> button.



Figure 8

- h) The following dialog box displays (Figure 9).



Figure 9

- i) When detection is completed, click Finish. The dialog box of Figure 10 displays.



Figure 10

- j) Windows will now auto-launch the PCMCIA Wizard. At the first dialog box (Figure 11) make sure No is selected and click Next>.

Welcome to the PC Card (PCMCIA) Wizard



Welcome to the PC Card (PCMCIA) wizard.

This wizard will help you remove your existing PC card drivers (which could conflict with the 32-bit Windows drivers) and install the 32-bit Windows drivers needed to support PC cards.

When installing support for your PC card driver, your PC cards will be temporarily disabled. This causes problems if you are using a PC card to copy the files needed to enable this support.

Are you using a PC card (network card, CD-ROM connected to a SCSI card, etc.) to install Windows?

- No
 Yes

< Back

Next >

Cancel

Figure 11

- k) The following dialog box appears (Figure 12). Make sure No is selected, then click Next>.

PC Card (PCMCIA) Wizard



Windows did not find any existing real-mode PC card drivers. Either you did not have any, or you have drivers that Windows couldn't detect.

If your PC cards were working properly before starting this wizard, you probably have drivers that Windows didn't detect. You should review your system files and select the drivers yourself.

Do you want to review your system files and select real-mode PC card drivers so Windows can disable them?

- No
 Yes

< Back

Next >

Cancel

Figure 12

- l) The following dialog box appears (Figure 13). Click Finish.

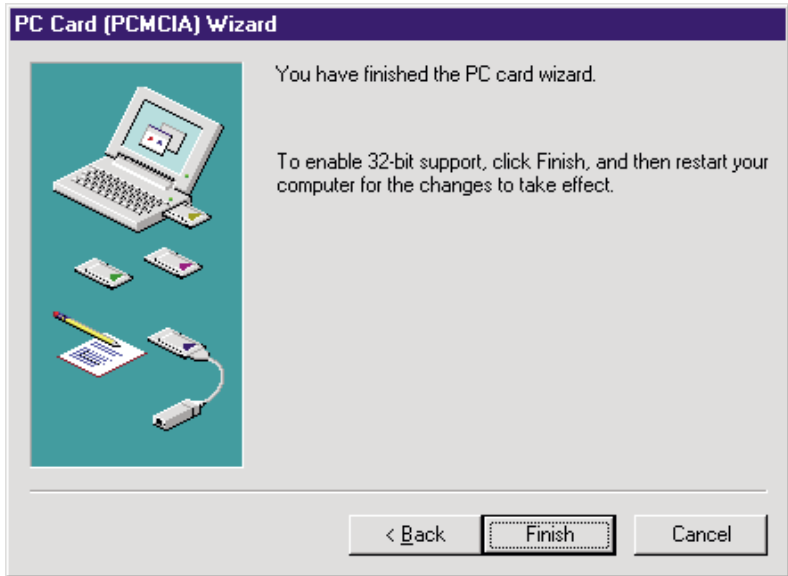


Figure 13

3. Reboot the computer.
4. Install APWIN software. If APWIN has been previously installed, it must be reinstalled. Follow the procedure of the appropriate *APWIN Installation and Getting Started Manual*, section 4. NOTE: DO NOT install the PCM-WIN card until after APWIN has been installed.
5. Insert the PCM-WIN card into either of the slots and connect the APIB interface cable to your Audio Precision hardware. Windows 95 or 98 recognizes the card insertion with a brief low-high tone.
6. Reboot the computer again.
7. Run APWIN. It should recognize your system (System One, System Two, or System Two Cascade), and you should hear relays clicking in the system.
8. To change computers, simply unplug the PCM-WIN card from one computer, and plug it into another. Windows 95 or 98 recognizes the card removal with a brief high-low tone.

For Windows NT Systems

1. Install the PCMCIA adapter card in the computer:
 - a) With the power turned off, remove the covers from the computer.
 - b) Install the PCMCIA adapter card in any available ISA slot.
 - c) Replace the covers and turn on the power.
2. Log in to Windows NT as Administrator.
3. Choose Start-Settings-Control Panel (Figure 14).

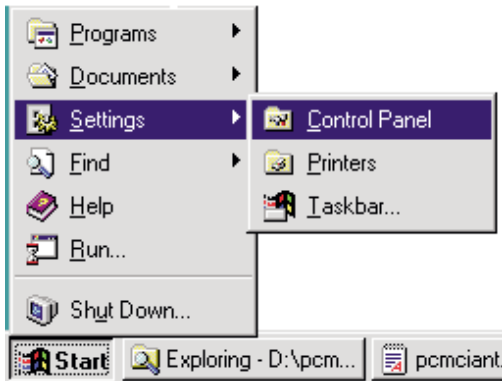


Figure 14

4. The window of Figure 15 appears. Double-click the Devices Icon.

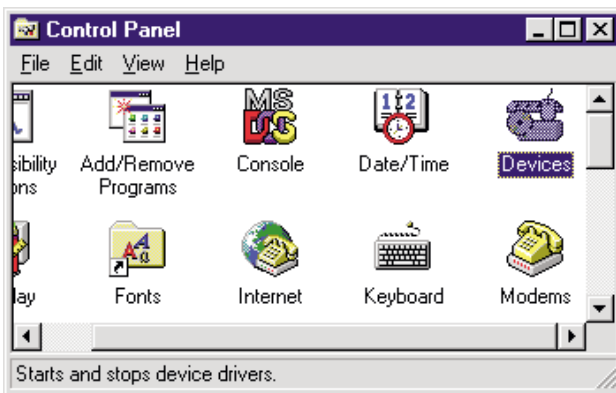


Figure 15

5. The window of Figure 16 appears. Locate and select the Pcmcia device then click the Startup button.

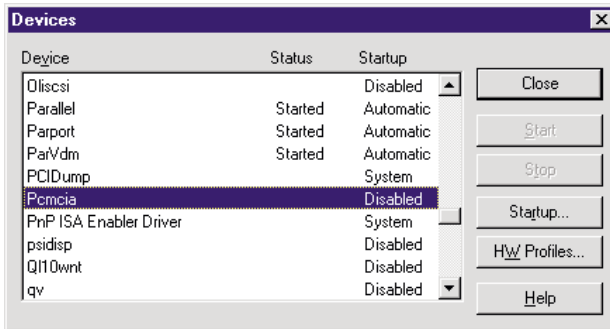


Figure 16

6. The window of Figure 17 appears. Change the Startup Type button to Boot and click OK.

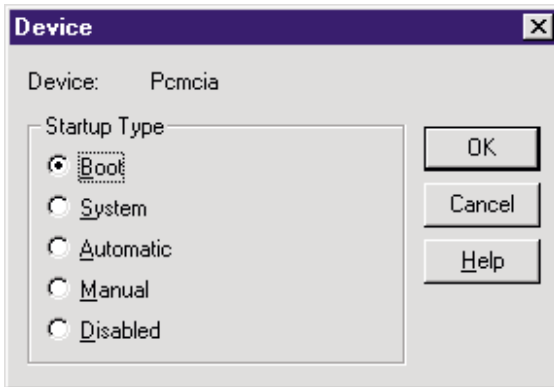


Figure 17

7. The window of Figure 18 appears. Click the Close Button.

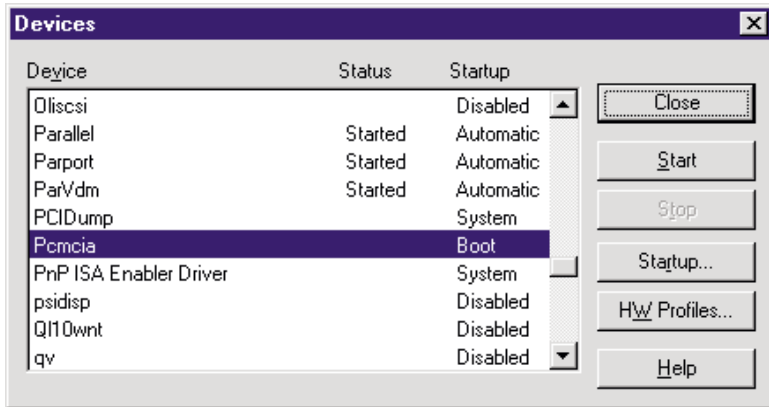


Figure 18

8. Reboot the computer.
9. Log in to NT as Administrator.
10. Install APWIN software. If APWIN has been previously installed, it must be reinstalled. Follow the procedure of the appropriate *APWIN Installation and Getting Started Manual*, section 4. NOTE: DO NOT install the PCM-WIN card until after APWIN has been installed.
11. Shut down the computer.
12. Install the PCM-WIN card in either of the PCMCIA slots and connect the APIB interface cable to your Audio Precision hardware.
13. Start your computer. You can log in under your normal username.
14. Run APWIN. It should recognize your system (System One, System Two, or System Two Cascade), and you should hear relays clicking in the system.



Audio Precision
P.O. Box 2209
Beaverton, Oregon 97075-2209
Tel: (503) 627-0832 Fax: (503) 641-8906
US Toll Free: 1-800-231-7350
Email: techsupport@audioprecision.com
Web Site: www.audioprecision.com